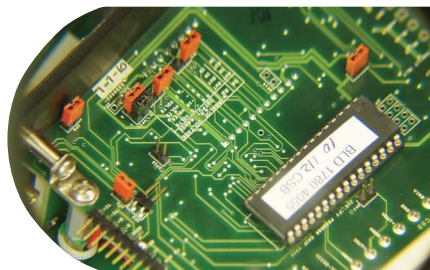




Multi-gas Detector MGT14 Series

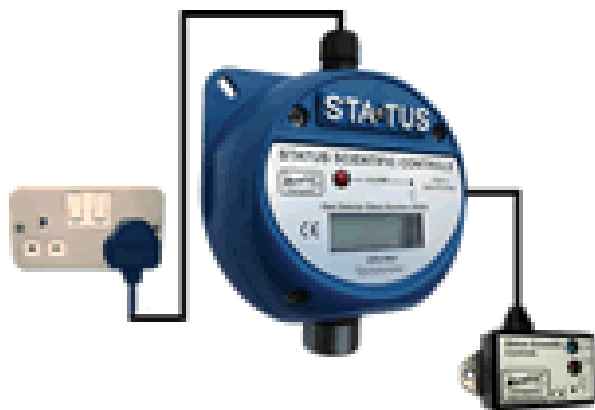


Small. Comprehensive. Reliable.

- IR sensors for detecting carbon dioxide
- Electrochemical sensors for detecting oxygen deficiency or toxic gases
- RS232 communications output
- Contains two control relays
- Stand-alone detector with display plus a remote display unit with audible alarm

The MGT14 Series gas monitors provide reliable performance for indoor/outdoor applications in non-hazardous areas where there is no risk of potentially explosive gases being present. The stand-alone detectors have a front panel LCD display plus a remote display unit with audible alarm. They use mains or DC power supply voltage and contain two control relays that can be activated by user defined alarm set points and used to control external equipment. The MGT14 detectors include one cable gland entry and one side entry for connection to the remote unit. The housing contains the connection terminals, electronics, and gas sensor.

MGT14 and optional weatherguard



Partial list of gases:

oxygen, carbon dioxide, Hydrogen sulphide, carbon monoxide, chlorine, nitrogen dioxide, ammonia, sulphur dioxide, nitric oxide, hydrogen chloride, ethylene oxide

Note: The MGT14 gas detectors must only be used in applications where there is no risk of potentially explosive gases being present or of them being created through industrial processes or other activities within the area.

Typical applications:

Application	Gas hazard
Confined spaces	Oxygen deficiency
Swimming pools	Chlorine
Boiler rooms, car parks	Carbon monoxide
Breweries and cellars	Carbon dioxide
Food and beverage processing	Carbon dioxide
Building health management	Carbon dioxide
greenhouses	Carbon monoxide, carbon dioxide, oxygen
Animal processing	ammonia

MGT14

Specifications

Material	Composite (ABS and polycarbonate)
Cable entries	1 x M20 or ½" NPT or ¾" NPT (for mains input) 1 x M12 (for connection to remote unit)
Dimensions	122 x 122 x 75 mm (4.8 x 4.8 x 3.0 in)
Weights	MGT14 (excluding weatherguard) – 900 grams (1.98 lbs.) Weatherguard – 225 grams (0.5 lbs.)
Display	Local display on the enclosure front panel and on the remote unit
Gas types	Oxygen or toxic gases
Supply voltage	Mains version: 85 to 265VAC, 47 to 440 Hz DC version: 8 to 24VDC
Alarm set points	Two user adjustable set points (range dependent on the gas type)
Alarm relay outputs	Voltage free, single pole change-over contacts; user selectable for normally energized or normally de-energized operation
Alarm contact rating	1A, 30VDC non-inductive load
Communications output	RS232
Visual alarm indication	Flashing red LED on front panel and on the remote indicator unit
Audible alarm indication	Intermittent alarm tone on front panel and on remote indicator unit
Sensor type	NDIR infrared or electrochemical
Measurement range	0—500ppm up to 0—100% volume for carbon dioxide 0—25% for oxygen 0—50ppm or up to 0—200ppm for hydrogen sulphide 0—500ppm or up to 0—1000ppm for carbon monoxide 0—20ppm for chlorine 0—20ppm for nitrogen dioxide 0—100ppm or 0—1000ppm for ammonia 0—20ppm for sulphur dioxide 0—100ppm for nitric oxide 0—30ppm for hydrogen chloride 0—100ppm for ethylene oxide
Response time	Oxygen and toxic sensor response times vary according to the actual sensor
IP rating	Enclosure: IP66 IP65
Sensor:	
Operating temperature	-10°C to +40°C (14°F to 104°F)
Storage temperature	-20°C to +50°C (-4°F to 122°F)
Humidity range	0 to 95% RH non-condensing

Specifications are subject to change without notice.
*Alternate sensors available upon request; service life may vary.



**Neutronics
Gas Analysis Solutions**
456 Creamery Way
Exton, PA 19341

Tel: 610.524.8800
Fax: 610.524.8807
Email: info@neutronicsinc.com

www.analyzegas.com

